


12-1-2011

## The Åland Islands' Emigration Institute

Follow this and additional works at: <https://digitalcommons.augustana.edu/swensonsag>

 Part of the [Genealogy Commons](#), and the [Scandinavian Studies Commons](#)

---

### Recommended Citation

(2011) "The Åland Islands' Emigration Institute," *Swedish American Genealogist*: Vol. 31 : No. 4 , Article 14.

Available at: <https://digitalcommons.augustana.edu/swensonsag/vol31/iss4/14>

This Article is brought to you for free and open access by Augustana Digital Commons. It has been accepted for inclusion in Swedish American Genealogist by an authorized editor of Augustana Digital Commons. For more information, please contact [digitalcommons@augustana.edu](mailto:digitalcommons@augustana.edu).



# The Åland Islands' Emigration Institute invites you to a Conference on the 2012/5th International Conference on Russian America

This conference is organized in partnership with the *1st Åland/Finland's International Conference on Russian America*. The conference will take place **2012 August 20-25** at Mariehamn, capital of Autonomous Åland Islands, Finland. The conference languages will include English & Russian. The theme for the conference will be **"Those Other Russians."** Examples are native Ålanders, Finlanders, Ingrians, Karelians, Veps, Estonians, Baltic Germans, Latvians, Poles, Swedes, Danes, Germans, Creoles, Kamchatdales, as well as native Americans and native Alaskans, etc.

## Call for papers

Requests are made for an abstract of proposed paper consisting of no more than 300 words written in English (perfection of language not required) to be submitted by E-mail to the following address

**emi.inst@aland.net** no later than *19 March 2012*.

There will be a slot of 20 minutes granted each paper delivered at this conference.

## Subjects

- 1) to focus on all people (other than ethnic Russians), present in Russian America.
- 2) to among them focus on those who as free agents were recruited into Company service.
- 3) to document the professions, and skills offered by various ethnic groups.
- 4) the interactions between individuals, within an ethnic group, as well as between these various ethnic groups.

The Åland Islands' Emigrant Institute

<http://www.eminst.net/starte.htm>

## The Swedish log cabin in Texas

In the Zilker Botanical Gardens in Austin, TX, there is an old Swedish log cabin, which was moved there from Round Rock in 1965.

Built in 1838, it is the first known cabin constructed in Travis County. Nearly 127 years later, it still

stands its ground in the gardens.

However, over the decades, tighter and tighter city budgets have left the cabin to more-or-less fend for itself. As a result, rainwater running off a steep hill behind the cabin pooled at the base of the building, severely rotting the lowest logs. The interior,

resplendent with a variety of period furniture and tools, fared little better.

Six years ago, *Barbara Pate* started pushing hard for those resources. She was motivated, not just by civic pride, but by a strong family connection.

"My great-grandmother

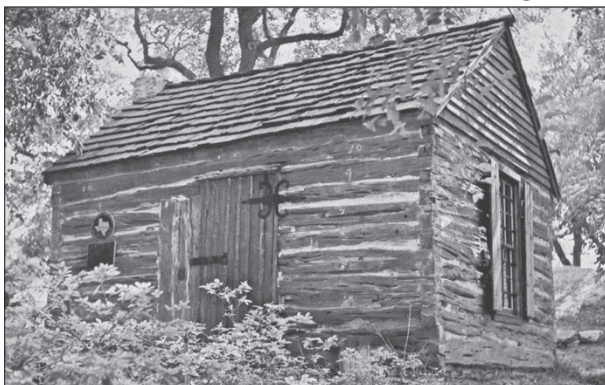
was born in this cabin," she said, opening a book about the history of Swedes in Texas and pointing to a photograph on the page. "Her name was Augusta Swenson Anderson."

Augusta, though, did not live in the cabin. The story goes that her mother and some other family members were paying a visit to the occupants of the cabin when Indian raids kept them from returning to their own home for three months.

Barbara Pate has managed to organize a group of volunteers to help restore the cabin, and has also found funding for this. So the cabin will have a new life to show youngsters and others that there is history nearby.

(From KXAN.com 2012 Jan. 26)

*Link on page 30.*



*The Swedish log cabin. Photo from [www.SweAme.org](http://www.SweAme.org).*