

The path of stroke care: nurse education materials for UnityPoint Health Trinity Medical Center

Nicole Montgomery
Augustana College, Rock Island Illinois

Follow this and additional works at: <https://digitalcommons.augustana.edu/celebrationoflearning>



Part of the [Medicine and Health Sciences Commons](#), and the [Social and Behavioral Sciences Commons](#)

Augustana Digital Commons Citation

Montgomery, Nicole. "The path of stroke care: nurse education materials for UnityPoint Health Trinity Medical Center" (2018).
Celebration of Learning.
<https://digitalcommons.augustana.edu/celebrationoflearning/2018/posters/24>

This Poster Presentation is brought to you for free and open access by Augustana Digital Commons. It has been accepted for inclusion in Celebration of Learning by an authorized administrator of Augustana Digital Commons. For more information, please contact digitalcommons@augustana.edu.



The Path of Stroke Care: Nurse Education Materials for UnityPoint

Health Trinity Medical Center
 Nikki Montgomery, Public Health, Anthropology
 Augustana College, Rock Island, IL



SETTING

UnityPoint Trinity Quality and Education Department

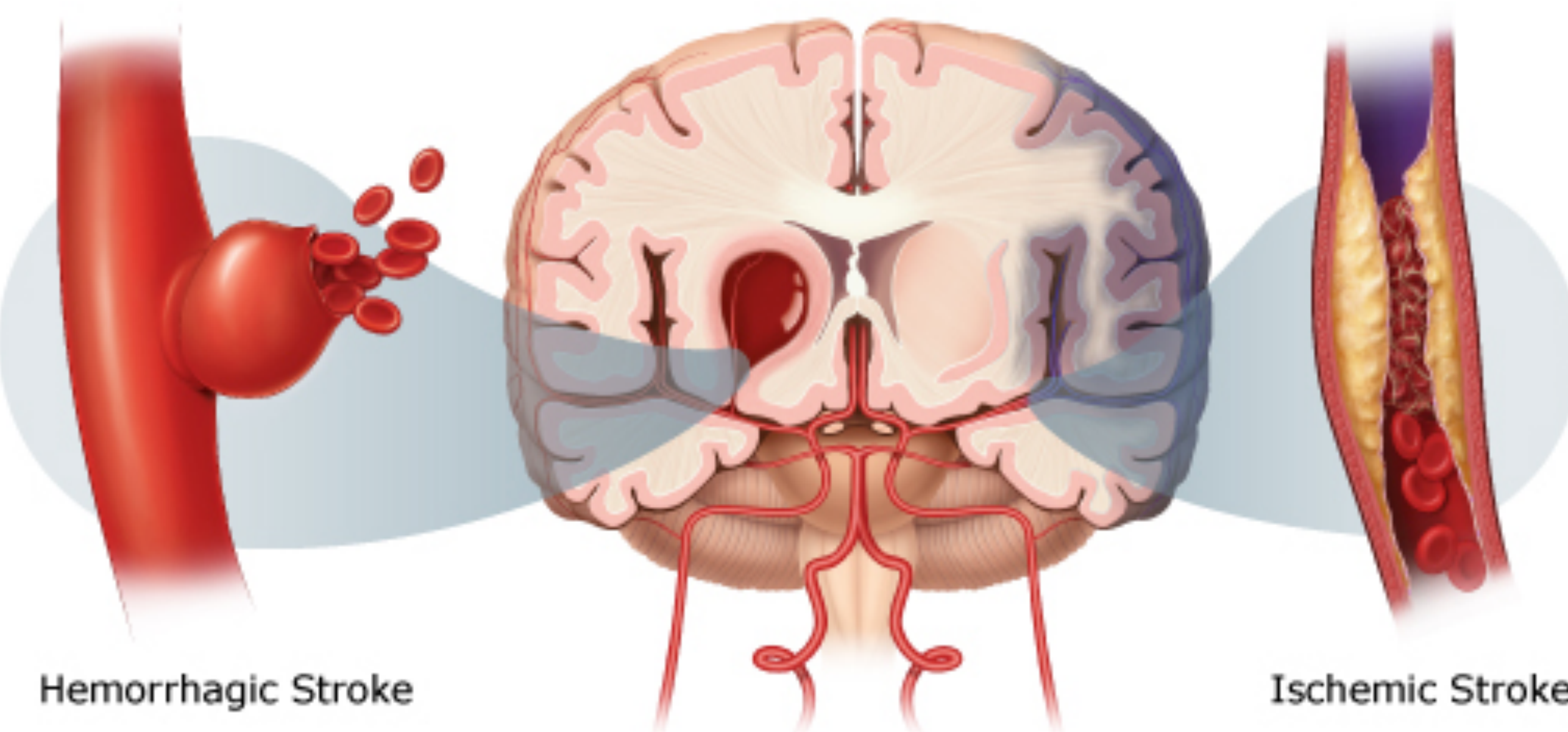
- Nonprofit and nondenominational health system
- Serves patients, visitors, and staff as well as the entire community
- Works to implement best practices and promote quality within the hospital

10-week Internship Experience

- Shadowed Kim Chant (RN, BSN), nursing professional practice coordinator & quality and education department clinical educator
- Worked alongside quality and education department to understand policies and procedures within hospital
- Shadowed 4th floor (oncology/neurology) to see policies and procedures implemented
- Introduced to different departments in the hospital that oversee and coordinate the care of stroke patients

BACKGROUND

- **Stroke:** occurs when brain's blood supply is interrupted or reduced, depriving brain tissue of oxygen and nutrients.
- National Top 10 Public Health Concerns (CDC)³
 - **Fifth leading cause of death** in the United States⁴
 - Kills 140,000 Americans each year (**1 in every 20 deaths**)⁴
 - High blood pressure, high cholesterol, smoking, obesity, and diabetes are leading causes of stroke⁴
 - 1 in 3 adults in America have at least one of these conditions⁴
- **Nurse's Role in Stroke Care**
 - Guide and supervise care of stroke patient
 - Educate and help facilitate support services
 - Intermediate between hospital and home-care
 - Implement best practices, Stroke Core Measures

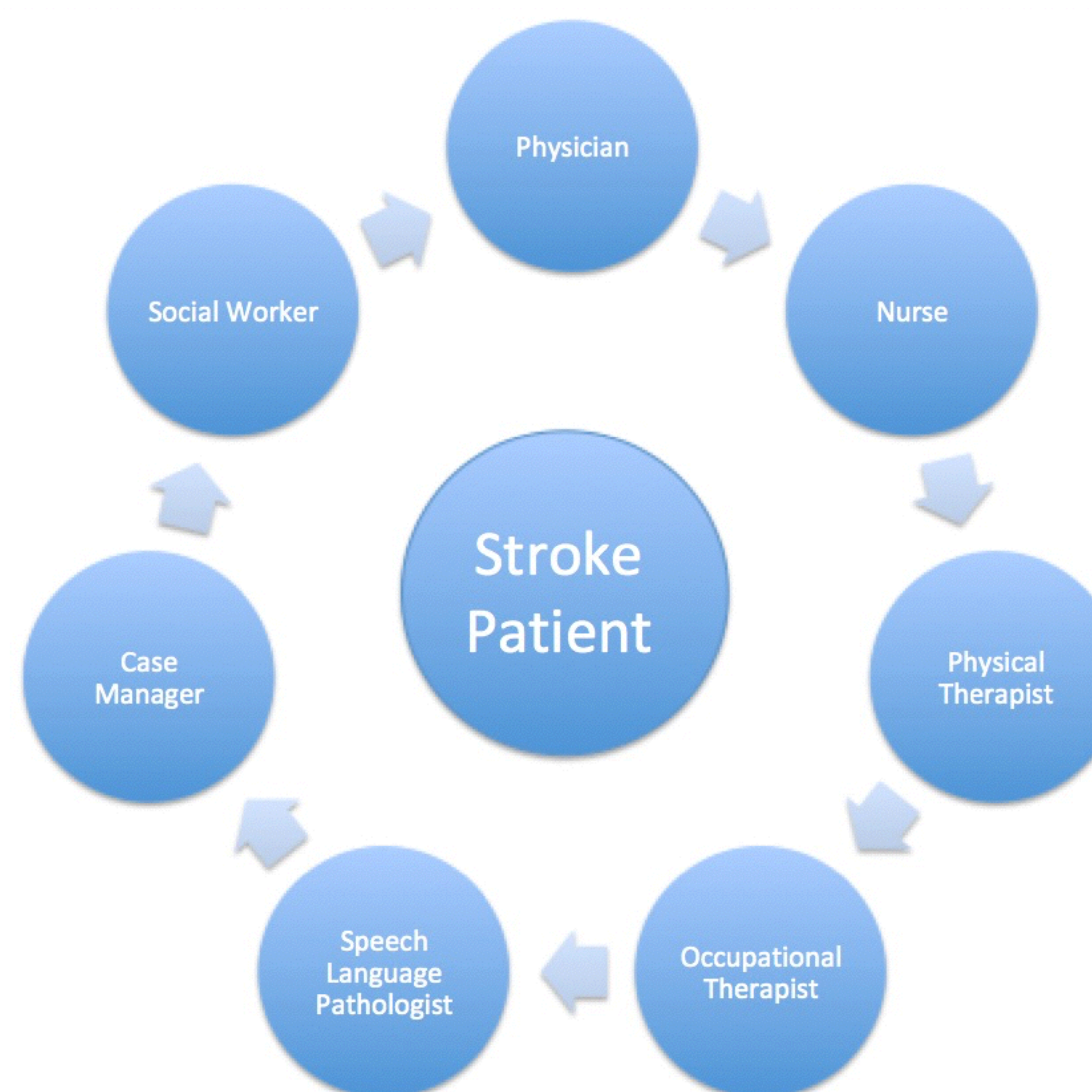


A hemorrhagic stroke occurs when there is bleeding inside or around the brain. During an ischemic stroke, a clot blocks blood flow to an area of the brain.

PROJECT OBJECTIVES

Create nurse education materials (poster presentation) that would:

1. Increase knowledge of multi-departmental roles in the care of a stroke patient
 - Understand the holistic care path of a stroke patient through UnityPoint Health Trinity Medical Center
2. Implement best practices in the daily care of stroke patients
 - Based on UnityPoint Trinity's Stroke Core Measures



Stroke patients are treated by a multi-departmental team of healthcare professionals. Each of these individuals have a unique and important role in the patient's care.

METHODS

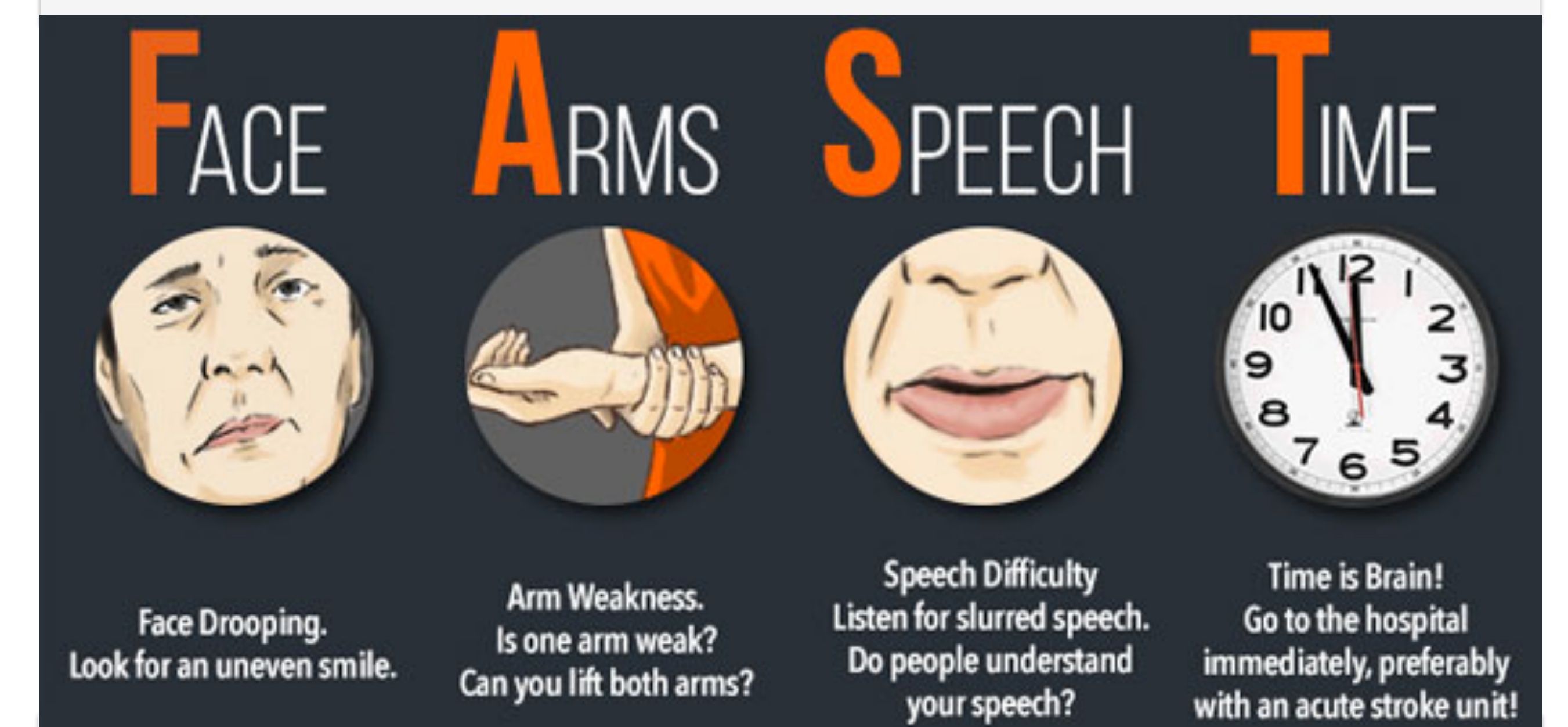
- Built off internship experiences to create nurse education materials in order to increase knowledge and promote best practices of stroke care across departments at UnityPoint Health Trinity Medical Center

Literature Review:

- Articles obtained through Augustana College's Library Databases and Trinity College of Nursing's Database
- Focused on importance of effective and quality stroke care, the nurse's role, and popular stroke care models.
- Contextualized findings by researching importance of continuing nursing education, effective poster presentation strategies, and beneficial learning tools.

RESULTS and DELIVERABLE

- Informational poster presentation regarding the care path of a stroke patient was created and delivered in order to educate nurses about national best practice measures.
 - Delivered at Spring Fling nursing educational fair.
- This project utilized interpersonal communication models to increase knowledge of multi-departmental roles in the care of a stroke patient as well as daily care best practices.
- These nurse education materials promoted best practices and facilitated education across departments to assure better quality stroke care through creating a more competent workforce.



FAST is a popular acronym used to help detect and improve responsiveness to stroke victim needs.

DISCUSSION and NEXT STEPS

- Next steps will include continuation of poster use in community outreach events and pamphlet in nursing orientations.
- This poster will help the community:
 1. Understand the severity of stroke
 2. Identify risk factors
 3. Recognize signs and symptoms of stroke
 4. Learn about stroke care

ACKNOWLEDGEMENTS

- **Dr. Lena R. Hann**, Asst. Professor, Public Health, Augustana College
- **Kim Chant**, RN, BSN, Nursing Professional Practice Coordinator, Quality and Education Department Clinical Educator
- **Paula Maddox**, UnityPoint Health Trinity Stroke Coordinator
- **Alyssa VanMelkebeke**, UnityPoint Health Trinity Case Manager
- **Jen Elliott**, UnityPoint Health Trinity Clinical Educator

REFERENCES

1. 2 Major Types of Stroke [Digital Image]. Retrieved April 16, 2018 from <http://fescenter.org/wp-content/uploads/2013/11/What-is-a-stroke.jpg>
2. Act FAST for Stroke [Digital Image]. Retrieved April 16, 2018 from <http://strokesupportassoc.org/wp-content/uploads/2013/05/fast-stroke-signs-20140519.jpg>
3. Centers for Disease Control and Prevention. Prevention Status Reports: National Summary. Atlanta, GA: US Department of Health and Human Services; 2016. Accessed [Jan 25, 2018]
4. Centers for Disease Control and Prevention. (2017, September 06). Stroke Facts. Retrieved February 05, 2018, from <https://www.cdc.gov/stroke/facts.htm>