

9-1-2002

Residents of Swede Hollow, St. Paul, Minnesota, 1873-85. Part 1

James E. Erickson

Follow this and additional works at: <https://digitalcommons.augustana.edu/swensonsag>



Part of the [Genealogy Commons](#), and the [Scandinavian Studies Commons](#)

Recommended Citation

Erickson, James E. (2002) "Residents of Swede Hollow, St. Paul, Minnesota, 1873-85. Part 1," *Swedish American Genealogist*. Vol. 22 : No. 3 , Article 6.

Available at: <https://digitalcommons.augustana.edu/swensonsag/vol22/iss3/6>

This Article is brought to you for free and open access by the Swenson Swedish Immigration Research Center at Augustana Digital Commons. It has been accepted for inclusion in Swedish American Genealogist by an authorized editor of Augustana Digital Commons. For more information, please contact digitalcommons@augustana.edu.

Swede Hollow Residents, 1873-1885. Part 1

James E. Erickson¹

This settlement, which is located in a ravine, is known as "Swede Hollow." All buildings are cheaply constructed board shanties.

- Notation on Sanborn Fire Insurance Map, St. Paul, MN, 1903

Introduction

A rather infamous ravine located on the northeast corner of downtown St. Paul, Minnesota, and variously known as Phalen Creek Valley, *Svenska Dalen*, Swede Dale, Swede Valley, or Swede Hollow, sheltered a succession of ethnic settlements from the 1850s to the 1950s. Included among the predominant resident squatters who lived in the shanties of Swede Hollow were hunters and trappers (late 1830s-1850s), Swedes (1860s-1900s), Italians (1900s-1920s), and Mexicans (1930s-1950s). Its basic history has been summarized thusly:

"Swede Hollow was an immigrant neighborhood in east St. Paul that was dominated by several ethnic groups throughout its more than 140 years of existence as a settlement. The history and lifestyle of the neighborhood's residents indicate that Swede Hollow was a true reflection of ethnic neighborhoods throughout the nation. Having difficulty in adapting to their new culture, immigrants were drawn to the little settlement and others of their own background. Living and working together, they maintained the values and traditions of their homeland. Many left Swede Hollow as soon as they accumulated some savings and a basic knowledge of the English language. By exposing them gradually to their new culture, the Hollow was a means of transition into American society. Others never left the neighborhood, content to let it isolate and protect them from the new land."²

The focus of this paper is rather narrow—to delineate the individuals who lived in Swede Hollow during the thirteen-year period 1873-1885. Readers who want or need more background information regarding the history of this unique place are referred to Mollie Price, "Swede Hollow: Sheltered Society For Immigrants to St. Paul," *Ramsey County Historical Society* (1982): 12-22 and Nels M. Hokanson, "I Remember St. Paul's Swede Hollow," *Minnesota History* (Winter 1969): 362-371.

¹ This research project was supported, in part, by a stipend from the Swedish Emigrant Institute (*Svenska Emigrantinstitutet*), Växjö, Sweden, in May and June of 2000.

² Mollie Price, "Swede Hollow: Sheltered Society For Immigrants to St. Paul," *Ramsey County History* (1982): 12-22.

Swede Hollow: Location

By most accounts, Swede Hollow proper is the area delimited by the intersection of Minnehaha Avenue and Payne Avenue on the north, Payne Avenue on the west, and East 7th Street on the south (see figure 1). For purposes of this study, however, East 6th Street will be considered the southern border of the Hollow. The reason for this is obvious. As the settlement's population size increased during the 1870s and 1880s, the squatters had to "spread out." Figure 2 shows representative photographs of "Swede Hollow" as it appeared in the 1900s near the end of the period of Swedish settlement. Note in particular the rather sizeable settlement that existed between East 6th Street and East 7th Street. Until at least 1885, the majority of individuals living in these shanties were Swedes. The exact locations and numbers of shanties from East 7th Street north and from East 7th Street south to East 6th Street are clearly indicated on Sanborn Fire Insurance Maps (see figures 3 and 4).

Figure 1 also indicates a settlement known as Connemara's Patch, which was delimited by East 4th Street on the north, Commercial Street on the east, and East 3rd Street on the south. This area along Phalen Creek was settled by immigrants from the Connemara district of Galway, Ireland, in the early 1880s. Thus the Swedes and the Irish were on opposite ends of the same ravine, separated by a two-block area between East 6th Street and East 4th Street.

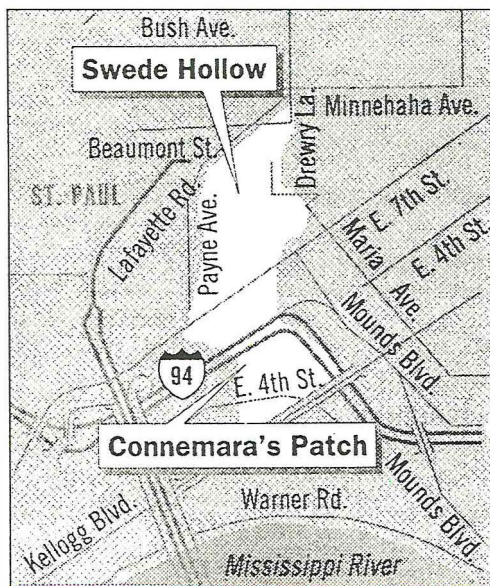


Fig. 1. Illustration showing the historic settlements of Swede Hollow and Connemara's Patch superimposed on a modern map of St. Paul. Courtesy of *Pioneer Press*, St. Paul, MN.

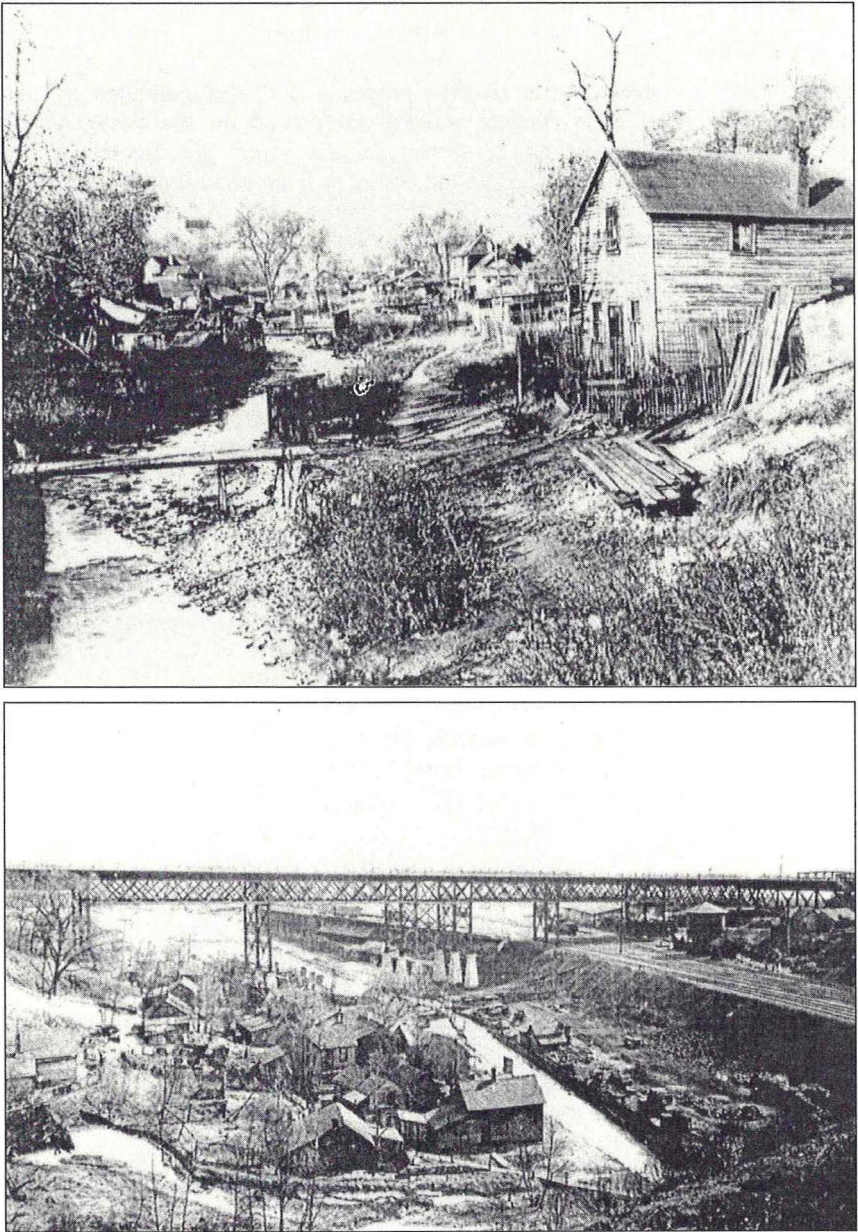


Fig. 2. Two views of Swede Hollow from East 7th St. Top: Looking north up Phalen Creek ca. 1912-15. Bottom: Looking southwest toward the East 6th St. bridge ca. 1900. Courtesy Minnesota Historical Society, St. Paul, MN.

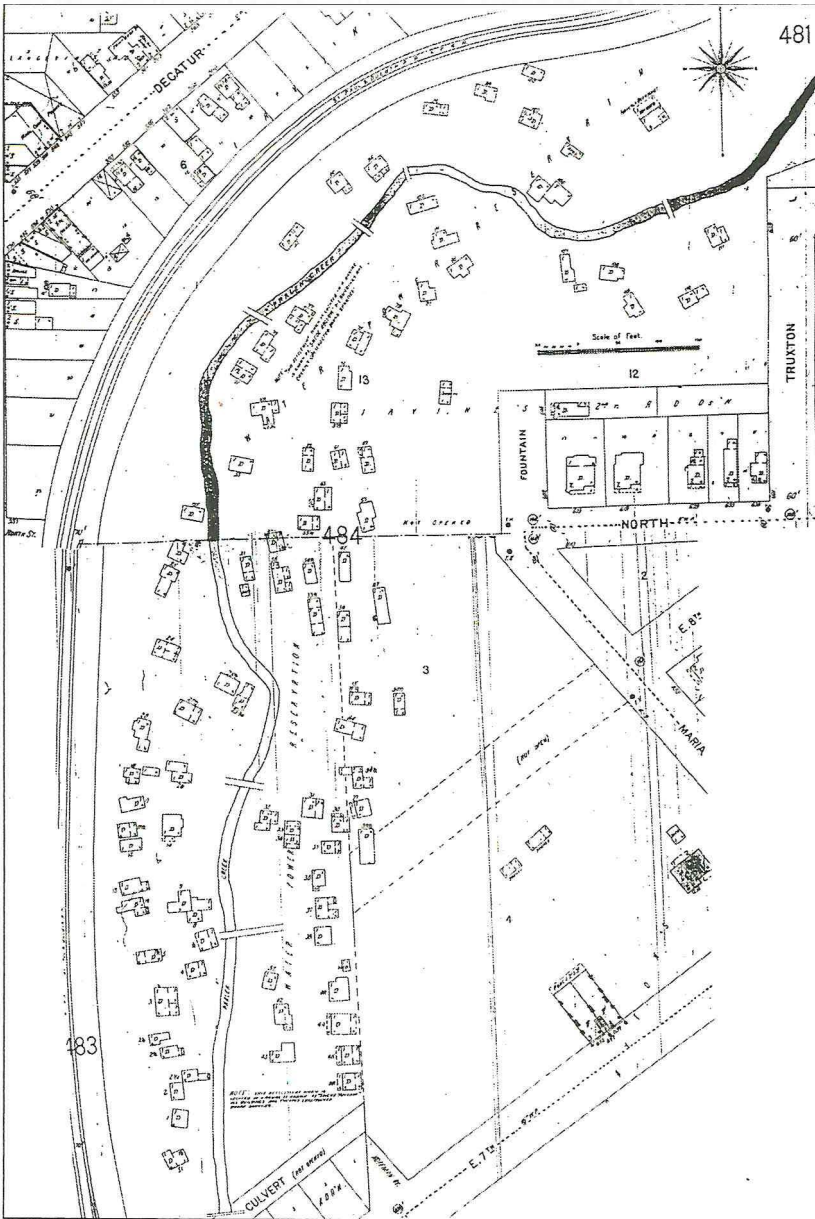


Fig. 3. Sanborn Fire Insurance Map (1903) indicating the size and location of all shanties in Swede Hollow north of East 7th Street. Compare with top photograph in figure 2.

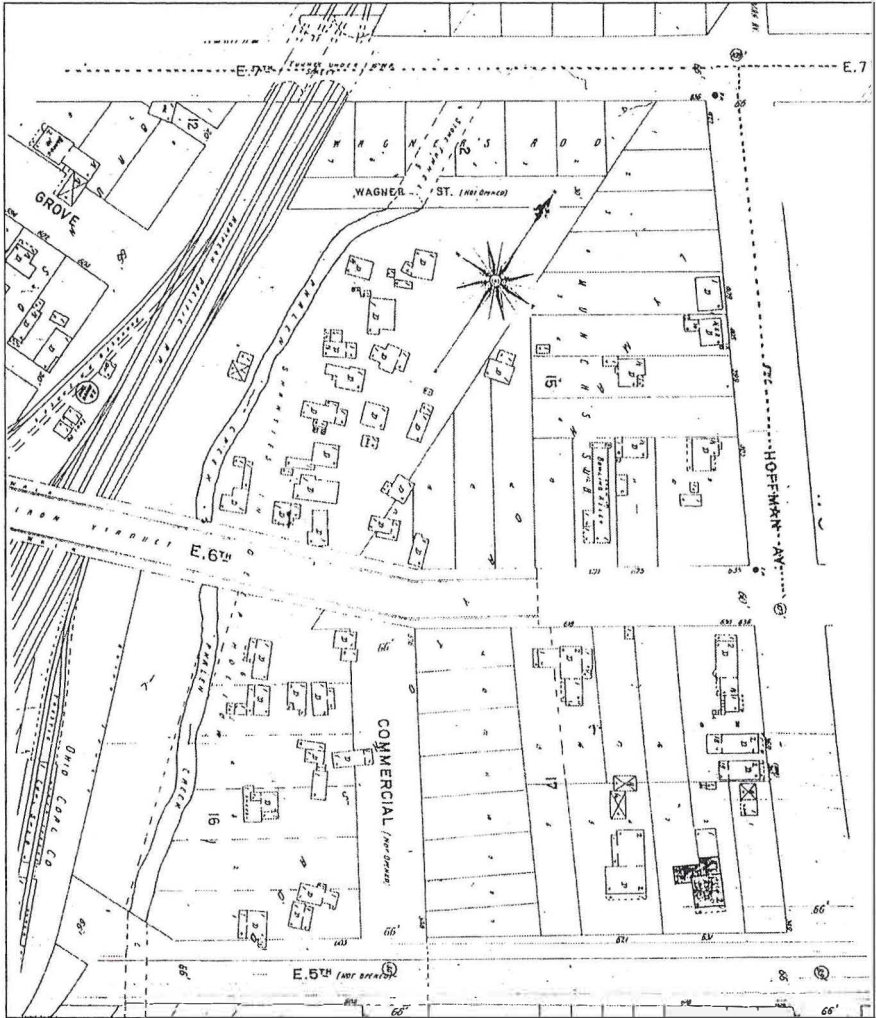


Fig. 4. Sanborn Fire Insurance Map (1903) indicating the size and location of all shanties in Swede Hollow south of East 7th Street. Compare with bottom photograph in figure 2.

Compiling A List of Swede Hollow Residents

The earliest reference to Swedes living in Swede Hollow appears to be the following account written in 1865:

“Three families of Swedes embracing thirteen persons in all, arrived in the city a few weeks ago, and are now in the most destitute circumstances. The baggage...belonging to them has been detained by certain railroad agents, for freight or passage, leaving them in a sad plight for weathering the storms of our rigorous winter...These distressed persons are all huddled in a vacant house on the other side of Trout Brook [a tributary of Phalen Creek], and the charitably disposed should take measures to aid them during the coming winter.”¹

This and other published accounts of Swede Hollow residents are long on generalities and short on specifics. Most simply refer to an ethnic group, e.g., Swedes or Italians, and not to individuals composing such a group. As I delved into the history of the Swedish period of settlement of the hollow, simple questions arose. What were the names and ages of the Swedes in the hollow? From what parishes in Sweden did they come? When did they arrive? How long did they stay? How big were their families? What were their occupations? How large was the settlement? The answers to these questions required the kind of details that had to be gleaned and compiled from available source material. Thus, I began the tedious process of identifying specific Swedes who lived in Swede Hollow.

I started with American source material that listed a particular individual as a resident of Swede Hollow. St. Paul city directories, federal and state censuses, and Swedish-American church records all proved to be of value in compiling an initial list of names. As can be seen in the following examples, the addresses of Swede Hollow residents were not consistent. Depending on the time period and/or the type of record, the address reference point varied from the railroad that ran through the hollow, to the creek that flowed through the hollow (note west side or east side; numbered and unnumbered), to streets adjacent to the hollow (e.g., 7th, 8th, Hopkins, Partridge, Collins, Hawkins, or North), to the hollow itself.

St. Paul City Directories

- 1873: Lagerblad, C. O.; laborer; resides L.S.&M.R.R. [Lake Superior & Mississippi Railroad] north of 7th [St.]
- 1880/1: Eskland, Andrew; teamster; resides west side of Phalen Creek 1 north of 7th [St.]
- 1882: Nordenstam, Andrew F.; buffalo robe maker; resides Phalen Creek near 7th St.

¹ “Distressed Families,” *St. Paul Daily Press*, 14 October 1865.

- 1884: Holmgren, Anders; blacksmith; resides 34 Phalen Creek north of 7th [St.]
- 1884: Anderson, John; laborer; resides Swede Hollow near 7th St. bridge

Federal Census Records

- 1880 U.S. Census, Ramsey Co., St. Paul, 5th Ward, ED 19, p. 8: "Squatters on Rail Road Land"

Swedish-American Church Records

- First Swedish Methodist Episcopal Church, Record of Probationers: "Mrs. Strandquist, Swedish Valley, Sept. 2nd"
- First Lutheran Church, Records of Baptisms, p. 36: "[baptised December] 15 [1888], Olga Carolina, [born] 4 November 1888, *Svenska dalen*, 110"
- First Lutheran Church, Records of Confirmations, p. 134: "1897, May 30, Jennie Monson, [born] 16/2 1882, Tranås, Malm. L., 84 Phalen Creek, [dau. of] John Monson"
- First Lutheran Church, Records of Marriages, p. 166: "1887 Nov. 26, John Peterson, age 28, and Josie Rosengren, age 30, Swedish Hollow, City"
- First Lutheran Church, Records of Funerals, p. 284: "1888 Oct. 9, Anton Walter[?] Österström, [died] 8 Oct., *Svenska dalen*, age 34 [years], 8 [months], 7 [days]"
- First Lutheran Church, Church Register (1878), p. 96: in the left-hand column the Johan Henrik Jakobson family is listed as residing in "*Sv. dalen*"

Identifying Swede Hollow Residents

Using the above-mentioned American records, I compiled a list of names of all individuals living in Swede Hollow between 1873 and 1885. The vast majority of them were, as expected, Swedish. My next goal was to link a specific person on the list with his/her parish of birth in Sweden. To accomplish this, I utilized three types of source material: Swedish-American church records (*Svenskanerikanska kyrkoarkiv*, i.e., SAKA) on microfilm;² EMIBAS, a searchable database located at the Swedish Emigrant Institute (Svenska Emigrantinstitutet), Växjö, Sweden;³ and the CD-EMIGRANTEN and the

² For more specific information see Lars-Göran Johansson, "Swedish Parish Archives in North America," *Swedish American Genealogist* XVI (December 1996): 257-273 and Ted Rosvall, "The Atlantic Bridge," *Swedish American Genealogist* XIX (June/September 1999): 214-220.

³ For two specific examples regarding the use of this powerful research tool see Ted Rosvall, "Olphult? The Sandgren Files. Part 1," *Swedish American Genealogist* XX (March 2000): 20-22 and James E. Erickson, "The Clue was on a Postcard," *Swedish American Genealogist* XX (September 2000): 133-144.

database Emihamn, which includes approximately 1.4 million names of individuals emigrating from Sweden (mostly Göteborg).⁴

Despite the usual complications associated with linking an immigrant with his/her parish of birth—unavailable information, insufficient information, erroneous and/or conflicting information, name changes, etc.—the following list is testimony to the fact that I had a modicum of success in accomplishing my goal.

Swede Hollow Residents, 1873-1885

Although this is a sizeable list of names, it is by no means exhaustive. I limited the scope of my project to the thirteen-year-period 1873-1885 to keep it manageable. After 1885, the sheer size of the population makes positive identification of individuals problematic. For example, during the five-year period between 1880 and 1884, the number of adult residents in Swede Hollow listed in the St. Paul City Directory jumps from 76 to 483. The 1884/5 directory alone lists 6 Carl Andersons, 12 John Andersons, 6 John Johnsons, 5 Peter/Per Olsons, etc. When faced with such numbers, sorting out individuals with patronymic surnames becomes virtually impossible.

Notes:

1. Individuals and/or families positively identified in EMIBAS are listed by their Swedish surnames.
2. Families identified from American census records are listed together by their Americanized surnames.
3. Single individuals known only by name, age, and place of birth are included in a separate list in Part 2.
4. Since there were the usual discrepancies between American and Swedish source material with respect to names and dates, the data presented in the following list should be considered as merely a starting point in any further research endeavor.
5. Under *Sources*, the symbol “#” followed by a number refers to a
 - dwelling number when used with a census citation
 - contract number when used with an EMIGRANTEN citation
6. Abbreviations:
 - ED = Enumeration District
 - EMIBAS = database at *Svenska Emigrantinstitutet*, Växjö, Sweden
 - EMIGR = CD-EMIGRANTEN
 - FCC = First Covenant Church, St. Paul
 - FLC = First Lutheran Church, St. Paul
 - SPCD = St. Paul City Directory
 - W = Ward

⁴ See Elisabeth Thorsell, “Databasen CD-Emigranten NR 1 & 2 / 2001,” *Swedish American Genealogist* XXII (March 2002): 50-51.

oOo

- **Åkesson, Sven** b. Fränninge M, 1857-11-24
Salberg, Anna b. Fränninge M, 1833-12-12

Sources: EMIBAS: 1880 Census, ED19, p. 23, #166

- | | | | |
|------------------------------------|------|---|-----------|
| ➤ Ander[s]son, A[ugust?] C. | 37 | M | Sweden |
| ---?, Catherine | 30 | F | Sweden |
| • Jennie | 6 | F | Sweden |
| • Anna | 5 | F | Sweden |
| • Ellen | 3 | F | Sweden |
| • Christina | 2/12 | F | Minnesota |

Source: 1885 Census, W5, #66

- | | | | |
|----------------------------|----|---|--------|
| ➤ Ander[s]son, And. | 30 | M | Sweden |
| ---?, Carin | 37 | F | Norway |
| • Ingeborg A. | 2 | F | Norway |

Source: 1880 Census, ED19, p. 23-24, #169

- | | | | |
|------------------------------|----|---|--------|
| ➤ Ander[s]son, Andrew | 32 | M | Sweden |
| ---?, Christin | 42 | F | Sweden |

Source: 1885 Census, W5, #166

- | | | | |
|------------------------------|----|---|-----------|
| ➤ Ander[s]son, August | 32 | M | Sweden |
| ---?, Kaisa | 32 | F | Sweden |
| • Emma | 3 | F | Minnesota |

Source: 1875 Census, W5, p. 1080, #114; 1880 Census, Ed19, p. 23, ##165; SPCD, 1875-84/5

- | | | | |
|--------------------------------|----|---|--------|
| ➤ Ander[s]son, Carolina | 30 | F | Sweden |
| • Alvilda | 8 | F | Sweden |
| • Torwall | 5 | M | Sweden |

Source: 1885 Census, W5, #62

- **Ander[s]son, Erik Johan** b. Ör P, 1864-02-01

Sources: EMIBAS; FCC; SAG (1993), 37, 158-59; SPCD, 1882/3

- | | |
|-----------------------------|-------------------------|
| ➤ Ander[s]son, Jan | b. Harg C, 1836-09-23 |
| Mattsdotter, Johanna | b. Väddö AB, 1844-05-01 |
| • Jenny Elvira | b. Edebo AB, 1871-12-23 |

• Engla Mathilda

b. Edebo AB, 1875-10-05

Sources: EMIBAS; EMIGR, #19:783:3846; 1885 Census, W5, #71

➤ Ander[s]son, John	29	M	Sweden
---?, Maria	27	F	Sweden
• Jennie W.	5	F	Sweden
• Selma C.	3	F	Sweden
• Ernst W.	4/12	M	Minnesota

Source: 1885 Census, W5, #157

➤ Ander[s]son, John	32	M	Sweden
---?, Emma	31	F	Sweden
• Augusta	7	F	Minnesota
• Emma	5	F	Minnesota
• Hannah	?	F	Minnesota

Source: 1880 Census, ED19, p. 23, #164; probably John Anderson, car cleaner/repairer, SPCD, 1877/8-80/1

➤ Ander[s]son, Josef Fritiof			b. Asarum K, 1844-01-13
Holm, Sofia			b. Vislanda G, 1847-01-04
• Danielsson, Carl Oskar			b. Urshult G, 1870-07-22
• Danielsson, Otto Herman			b. Urshult G, 1875-12-19
• Danielsson, Fritiof			b. Urshult G, 1877-10-15
• Josefsdotter, Anna Maria			b. Urshult G, 1880-09-20
• Josefsdotter, Lovisa			b. Väckelsång G, 1882-06-07
• Edward			b. St. Paul ca. 1885-04

Sources: EMIBAS; EMIGR, #1883:2196:696; 1885 Census, W5, #43; SPCD, 1884/5

➤ Ander[s]son, Lars E.			b. Lännäs T, 1846-02-06
Olsdotter, Christina,			b. Svinna T, 1847-01-21
• Anna Sophia			b. Lännäs T, 1876-08-13
• Hjalmar Erik			b. Lännäs T, 1880-01-01
• Eva Charlotta			b. St. Paul, 1885-03-21

Sources: 1885 Census, W5, #65; EMIGR, #17:162:19152; SAG (1993), 38, 159; SPCD, 1882/3-84/5

➤ Ander[s]son, Mons	25	M	Sweden
---?, Anna	30	F	Sweden
• Hilma	7/12	F	Minnesota

Source: 1885 Census, W5, #71

➤ Ander[s]son, Per	26	M	Sweden
---?, Anna	?	F	Sweden

Source: 1885 Census, W5, #172

➤ Ander[s]son, R. P.	27	M	Sweden
---?, Sophia	26	F	Sweden

Source: 1885 Census, W5, #59

➤ Berglind, Johan	37	M	Sweden
---?, Carolina.	32	F	Sweden
• Carl Johan	4	M	Sweden
• Johan A.	2	M	Sweden

Source: 1880 Census, ED19, p. 24, #172

➤ Bill, Hilmer			b. Steneby P, 1845-03-03
Olsdotter, Sofia,			b. Steneby P, 1840-07-09
• Hilma			b. Wolworth, WI, 1869-11-01
• Carl Johan			b. St. Paul, 1874-11-04
• Daniel			b. St. Paul, 1879-08-08

Sources: EMIBAS; EMIGR, #1:221:9 & #1:221:10; FLC (1856), p. 5; FLC (1872), p. 82; SPCD, 1873, 1875, 1882/3

➤ Bolin, Alfred S.			b. Lundby R
Matsdotter, Emelie Maria			b. Hovmantorp G, 1864-01-25
• Hazel Constantia			b. St. Paul, 1888-10-26

Sources: EMIBAS; EMIGR, possibly #19:400:15054; FLC, p. 79; SPCD, 1884/5

➤ Bolin, Chas.	24	M	Sweden
---?, Amanda	24	F	Sweden
• Ester	5/12	F	Minnesota

Source: 1885 Census, W5, #153; SPCD, 1884/5

➤ Boo, Sven August			b. Hedared P, 1833-03-10
Persdotter, Anna			b. Seglora P, 1853-02-13
• Selma			b. Sandhult P, 1864-01-26
• Anna Mathilda			b. Sandhult P, 1866-11-21
• Maria			b. Sandhult P, 1872-01-04
• Frans Hilmer			b. Sandhult P, 1875-04-29
• Dina Wilhelmina			b. Sandhult P, 1880-05-02
• Erik Leonard			b. Sandhult P, 1883-01-09

Sources: EMIBAS; EMIGR, #30:266D:1705 and #36:387:4961, possibly #18:138:22547 and #18:723:14268; SPCD, 1884/5

➤ **Borstrom** [*sic*], Andrew 30 M Sweden

Source: 1875 Census, W5, p. 1080, #113

➤ **Brandt**, Nils Olsson b. Simris L, 1848-03-19
Christiansdotter, Anna b. Brantevik, Simris L, 1849-02-26
 • Botilla Carolina b. Simris L, 1875-09-17
 • Hilma Augusta b. Brantevik, Simris L, 1877-08-13
 • Otto Conrad b. Brantevik, Simris L, 1879-11-12
 • Emma Charlotta Annette b. St. Paul, 1885-04-24

Sources: EMIBAS; EMIGR, #1881:300:795 and #1884:1481:508; 1885 Census, W5, #56; FCC: SAG (1993), 42, 161-62

➤ **Brown**, John 39 M Ireland
 ---?, Ellen 37 F Ireland
 • Bridget 8 F Ireland
 • Anna 6 F Ireland
 • Maggie 4 F Ireland
 • Patrick 2 M Minnesota
 • Lawrence 2 M Minnesota
 • Davis 5/12 M Minnesota

Source: 1885 Census, W5, #47

➤ **Carlson**, Alfred 21 M Sweden
 ---?, Johanna 21 F Sweden
 • Virginia N. 7/12 F Minnesota

Source: 1885 Census, W5, #165

➤ **Carlson**, C. A. 45 M Sweden
 ---?, Johanna 40 F Sweden
 • Emma E. 4 F Sweden

Source: 1885 Census, W5, p. 21, #147; SPCD, 1884/5

➤ **Carlson**, Gustave 33 M Sweden
 ---?, Louisa 37 F Sweden
 • Carl 8 M Sweden
 • Ester 4 F Minnesota

Source: 1875 Census, W5, p. 1081, #116

➤ Christianson, H.	28	M	Sweden
---?, Elna	34	F	Sweden
• Nels	6	M	Sweden
• Carl W.	2	M	Sweden
• Anna	1	F	Sweden

Source: 1880 Census, ED19, p. 25, #183

➤ Christensson, Johannes (aka Christianson, John)	b. Örskelljunga L, 1828-01-19; d. 1897-11-26
Andersdotter, Sara Maria	b. Kånna G, 1812

Sources: EMIBAS: 1885 Census, W5, #57

➤ Da[h]lin, Aron Anton	b. Risinge E, 1853-01-23
-------------------------------	--------------------------

Source: EMIBAS; 1885 Census, W5, #48: SPCD, 1884/5

➤ Davidson, Ola	24	M	Sweden
---?, Ele	22	F	Norway
• Maria	11/12	F	Norway

Source: 1880 Census, ED19, p. 23-24, #166

➤ Dommineck, Mary	40	F	Poland
• Michael	18	M	Poland
• Herman	17	M	Poland
• Fredrick	12	M	New York
• Katie	10	F	New York
• Peter?	6	M	New York
• Frank	3	M	New York

Source: 1880 Census, ED18, p. 8, #64

➤ Eckeman, Geo.	32	M	New Jersey
---?, Mary A.	29	F	New York
• Emma	10	F	New York
• Joseph	9	M	New York
• ---?	6	M	New York
• Mary Ann	4	F	New York

Source: 1885 Census, W5, #159

➤ Ek, Karl Nils	b. Höganäs M, 1834-04-17
Arvidsdotter, Kristina	b. Höganäs M, 1837-04-07
• Arvid	b. Höganäs M, 1861-09-11
• Emil	b. Höganäs M, 1865-12-20

- Hilda b. Höganäs M, 1868-06-08
- Ida b. Höganäs M, 1870-06-24

Sources: EMIBAS; SPCD, 1873

- **Ekman, Jan Peter Larsson** b. Huggenäs S, 1834-12-19
Andersdotter, Cajsa (Karin) b. Sillerud S, 1833-10-06

Sources: EMIBAS; FLC (1856), p. 12; 1885 Census, W5, #60; SPCD, 1884/5

- **Ekström, Nils Magnus** b. Källstorp M, 1855-04-28
 1. **Andersdotter, Bengta** b. Tullstorp M, 1856-09-20
 2. **Nilsdotter, Johanna** b. Tullstorp M, 1856-04-21

Sources: EMIBAS; EMIGR, #1882:4308:354, #1888:3686:537; SPCD, 1884/5

- | | | | |
|---------------------|------|---|-----------|
| ➤ Ekvall, B. | 30 | M | Sweden |
| ---?, Anna | 25 | F | Sweden |
| • Carl G. | 2 | M | Sweden |
| • Ellen | 1/12 | F | Minnesota |

Source: EMIGR, probably Bengt Ekvall Persson from Stora Herrestad, #1880:326:103; 1880 Census, ED19, p. 25, #186; SPCD, 1882/3

- **Eld, Johanna** (widow of Nels)

Source: FLC (1872), p. 70

- | | | | |
|-----------------------------|----|---|--------|
| ➤ Erickson, [?]unard | 50 | F | Norway |
| • Pauline | 26 | F | Norway |
| • Ole | 23 | M | Norway |
| • Mary | 18 | F | Norway |
| • Armon | 14 | M | Norway |
| • Evan | 12 | M | Norway |

Source: 1875 Census, W5, p. 1081, #119; possibly Mrs. R. Erickson, SPCD, 1875-78/9

- **Erickson, Hans** b. Högestad L, 1853-06-17
Svensdotter, Sissa b. Benestad L, 1855-04-12

Source: EMIBAS; EMIGR, #1881:994:22; SPCD, 1884/5

- | | | | |
|-----------------------|----|---|----------|
| ➤ Erickson, P. | 40 | M | Sweden |
| ---?, Anna | 38 | F | Denmark |
| • John | 4 | M | Denmark |
| • Emanuel | 2 | M | Illinois |
| • Helen | 1 | F | Illinois |

Source: 1875 Census, W5, p. 1082, #127

➤ **Esklund, Anders Nilsson
Danielsdotter, Agneta**

- Anders
- Nils Gustaf
- Ewald
- Hulda Teresia

- b. Glava S, 1832-11-17
- b. Silbodol S, 1843-02-05;
d. 1911-12-05
- b. Sillerud S, 1866-02-18
- b. Sillerud S, 1867-10-31
- b. St. Paul, 1879-06-21
- b. St. Paul, 1883-11-11

Sources: EMIBAS; 1875 Census, W5, p. 1080, #111; 1880 Census, ED19, p. 22, #162; FLC (1856), p. 8; FLC (1872), p. 92; SPCD, 1873-1882/3

➤ **Fahlqvist, Johan
Olsdotter, Ingeborg**

- Olof Anton
- Maria

- b. Östra Ämtervik S, 1850-07-19
- b. Brunflo Z, 1854-04-13
- b. Hammerdal Z, 1878-01-14
- b. Östersund Z, 1879-11-29

Sources: EMIBAS; FLC (1856), p. 29; SPCD, 1882/3-84/5

➤ **Fahlqvist, Johan
Johansdotter, Sofia**

- b. Sweden ca. 1850
- b. Linderås F, 1851-08-15

Sources: EMIBAS; FCC; SAG (1993), 47, 166; SPCD, 1884/5

➤ **Fahlqvist, Maria Olsson**

- b. Östra Ämtervik S, 1807-07-20;
d. 1888-02-04

Sources: EMIBAS; FLC (1856), p. 30

➤ **Fahlqvist, Nils
Persdotter, Anna**

- Matilda Kristina
- Per Brynold
- Nils Olof
- Johanna Fredrika
- Karl Gustaf
- Anna Maria
- Karl August

- b. Östra Ämtervik S, 1836-08-26
- b. Undersåker Z, 1842-04-05
- b. Östra Ämtervik S, 1862-12-24
- b. Östersund Z, 1865-08-05
- b. Östersund Z, 1874-04-18
- b. Östersund Z, 1876-09-22
- b. Östersund Z, 1879-02-27
- b. St. Paul, 1882-01-11
- b. St. Paul, 1884-10-12

Sources: EMIBAS; 1880 Census, Ed19, p. 23, #167; FLC (1856), p. 18; SPCD, 1880/1-82/3

➤ **Fahlqvist, Per Bernold
(son of Nils Fahlqvist)
Holmgren, Emili Jenny Maria**

- b. Östersund Z, 1865-08-05
- b. Högsby H, 1868-07-23

Sources: EMIBAS; FLC (1856), p. 18; SPCD, 1882/3

- **Fember(?)**, Chas. 25 M Sweden
 ---?, Ingrid
- Source*: 1885 Census, W5, #155; SPCD, 1884/5
- **Flink**, Nicolaus Karlsson b. Härjevad R, 1842-10-01;
 d. 1903-09-13
Johansdotter, Anna Cajsa b. Saleby R, 1832-01-02;
 d. 1910-06-25
- Agnes Ellen Lovisa b. Hällum R, 1867-08-25
 - Emilia Susanna b. Edsvära R, 1869-08-09
 - Elisabet b. Hällum R, 1871-03-02
- Sources*: EMIBAS; EMIGR, #17:236:10892; FLC (1856), p. 25; SPCD, 1882/3
- **Flum**, Alexander 29 M Norway
 ---?, Hannah 36 F Sweden
- Olof 12 M Minnesota
 - Lena 10 F Minnesota
 - Chas. 8 M Minnesota
 - Mary 7 F Minnesota
 - Henry 4 M Minnesota
- Source*: 1885 Census, W5, #177; SPCD, 1884/5
- **Fors**, Andrew 70 M Sweden
 ---?, Ellen 58 F Sweden
- Alfred ? M Sweden
- Source*: 1885 Census, W5, #161; SPCD, 1884/5
- **Franson**, John 33 M Sweden
 ---?, Clara 22 F Sweden
- Source*: 1885 Census, W5, #180
- **Frisk**, Nils Nilsson b. Fränninge M, 1852-09-07
- Sources*: EMIBAS; 1885 Census, p. 133; FLC; FCC; SPCD, 1884/5
- **Gawlick/Gaflick**, Paul 40 M Poland
 ---?, Katrine 45 F Poland
- John 16 M Poland
 - Andrew 9 M Poland
 - Anton 7 M Poland
 - Mike 1 M Minnesota

Source: 1885 Census, W5, #81; SPCD, 1884/5

- **Glad, Per (Peter) L.**
Jacobsson, Anna
 • Ellen
 • Botilla
 • Maria
 • Ingri
- b. Blentarp M, 1823-09-29
 b. Blentarp M, 1839-03-14
 b. Sweden ca. 1855
 b. Sweden ca. 1862
 b. Blentarp M, 1865-03-31
 b. Brandstad M, 1874-07-14

Sources: EMIBAS; EMIGR, #1881:1521:1114; 1885 Census, W5, #79; SPCD, 1884/5

- **Gustaf[s]son, Anders** b. Rydaholm F, 1838-09-27

Sources: EMIBAS; EMIGR, #5:45:3306; SAG (1993), 48, 167; SPCD, 1884/5

- | | | | |
|------------------------------|----|---|-----------|
| ➤ Gustaf[s]son, Peter | 44 | M | Sweden |
| ---?, Christina | 42 | F | Sweden |
| • Ida | 17 | F | Sweden |
| • Chas. | 14 | M | Sweden |
| • Hilda | 10 | F | Sweden |
| • Anton | 7 | M | Sweden |
| • Hulda | 4 | F | Minnesota |

Source: 1885 Census, W5, #162

- | | | | |
|------------------------|-------|---|-----------|
| ➤ Haglund, Lina | 30 | F | Sweden |
| • Olga | 10/12 | F | Minnesota |

Source: 1880 Census, ED19, p. 23, #166

- **Hammarqvist, Ed** b. Sweden <1845
 ---?, Maria b. Lekaryd G, 1841-08-03
 • Louisa Anderson b. Sweden ca. 1869

Source: FCC, p. 8; 1875 Census, W5, p. 1082, #128; SPCD, 1873-79/80

- | | | | |
|---------------------------|----|---|-----------|
| ➤ Hammerland, John | 41 | M | Sweden |
| ---?, Anna | 41 | F | Sweden |
| • Maggie | 13 | F | Sweden |
| • John | 11 | M | Sweden |
| • Selma | 2 | F | Minnesota |

Source: 1885 Census, W5, #71

- | | | | |
|----------------------------|----|---|--------|
| ➤ Han[s]son, Andrew | 28 | M | Norway |
| ---?, Sophia | 27 | F | Sweden |

Source: 1885 Census, W5, #162; SPCD, 1884/5

➤ **Han[s]son, Göran** b. Kverrestad L, 1850-02-02

Sources: EMIBAS: 1885 Census, W5, #174; SPCD, 1884/5

➤ Han[s]son, Goran	3?	M	Norway
---?, Maria	27	F	Sweden
• Henry	3	M	Minnesota

Source: 1885 Census, W5, #174

➤ Hanson, Oscar	48	M	Sweden
---?, Elsa Ch.	20	F	Sweden

Source: 1880 Census, ED19, p. 23, #168; SPCD, 1884/5

➤ Holmgren, Sven			b. Högsby H, 1821-01-25
Jacobsdotter, Lena Cajsa			b. Högsby H, 1836-11-23
• Anna Allida Fredrika			b. Högsby H, 1859-06-04
• Amanda Charlotta			b. Högsby H, 1861-11-26
• Alma Laura Sophia			b. Högsby H, 1865-03-10
• Emelie Jenny Maria			b. Högsby H, 1868-07-23
(wife of P. B. Fahlqvist)			

Source: EMIBAS

➤ Hurd, Seldon	37	M	New York
---?, Anna	27	F	Sweden
• Josie	1	F	Minnesota
• Virgil	0	M	Minnesota

Source: 1875 Census, W5, p. 1081, #123; SPCD, 1875-76

➤ Jackson, John	31	M	Sweden
---?, Anna L.	30	F	Sweden
• Gustaf W.	7	M	Sweden
• Johan B.	4	M	Sweden
• Anna L. C.	2	F	Sweden

Source: 1880 Census, ED19, p. 24, #171

➤ Jacobsson, Anders			b. Larv R, 1835-07-01
(aka Jackson, Andrew)			
Johansdotter, Inga Kajsa			b. Larv R, 1834-06-26
• Clara Maria			b. Larv R, 1861-09-28
• Tilda			b. Larv R, 1863-11-29

- Elisabet
- Anna Lovisa
- Albert

- b. Larv R, 1867-11-18; d. 1873-08
- b. St. Paul, 1875-01-22
- b. St. Paul ca. 1877

Sources: EMIBAS; EMIGR, #2:11:312 & #6:607:5020; 1875 Census, W5, p. 1081, #117; 1880 Census, ED19, p. 24, #170; FLC (1872), p. 82; SPCD, 1875-80/1

➤ **Jacobsson, Bengt**
(aka **Jackson, Bengt**)

Johansdotter, Annika

- Svante
- Charlotta
- Alfred
- Klara
- Matilda
- Karl Ludvig

- b. Kinneved R, 1820-06-13

- b. Bitterna R, 1826-04-19
- b. Larv R, 1851-03-26
- b. Sweden ca. 1856
- b. Larv R, 1859-11-26
- b. Larv R, 1861-10-28
- b. Larv R, 1864-08-13
- b. Larv R, 1869-01-12

Sources: EMIBAS; EMIGR, #6:607:5023, #8:461:10350, #10:419:11467, and #10:419:11468; 1875 Census, W5, p. 1081, #118; 1880 Census, ED19, p. 24, #173; 1885 Census, W5, #179; FLC (1872), p. 78; SPCD, 1875, 1877-84/5

➤ **Jacobsson, Johan Ture**
Tollström, Gustava Maria
• Niklas Axel

- b. Gerum I, 1852-04-07
- b. Garde I, 1857-12-09
- b. Garde I, 1879-05-16

Sources: EMIBAS; 1885 Census, W5, p. 21, #148; SPCD, 1882/3-84/5

➤ **Johannesson, Andreas**
(aka **Johnson, Andrew/Anders**)

- ?, Gustava
- Johan Gustaf
 - Anna Mathilda
 - Amanda
 - Carl Axel
 - Selma

- b. Annerstad G, 1840-03-23
- b. Annerstad G, 1849-08-26
- b. Berga G, 1868-03-20
- b. Tutaryd G, 1870-10-06
- b. Tutaryd G, 1873-03-26
- b. Tutaryd G, 1876-12-28
- b. Tutaryd G, 1879-06-29

Source: EMIBAS; 1885 Census, W5, #154

➤ **Johannesson, Lars Magnus**
Nilsdotter, Maria
• Hjalmar Ferdinand
• Frida Maria

- b. Nyed S, 1841-09-09
- b. Sunne S, 1842-10-10
- b. Söderala X, 1877-07-02
- b. Söderala X, 1880-09-11

Sources: EMIBAS; 1885 Census, #171; SPCD, 1884/5

➤ **Johansson, Gustav**
Bengtsson, Magdalena

- b. Larv R, 1832-12-11
- b. Larv R, 1835-05-23

Source: 1885 Census, W5, #73

➤ Johnson, Axel	35	M	Sweden
---?, Anna M.	29	F	Sweden
• Lottie M.	9	F	Sweden
• Hulda O.	7	F	Sweden
• Oscar A.	5	M	Sweden

Source: 1885 Census, W5, #156

➤ Johnson, C. D.(J?)			b. Sweden ca. 1855
Svantesdotter, Lovisa			b. Tun R, 1858-09-17

Source: 1885 Census, W5, #63; FLC (1878), p. 132

➤ Johnson, Chris	36	M	Norway
---?, Bertha	34	F	Norway
• Chris	6	M	Norway
• Tuller	4	M	Norway

Source: 1875 Census, W5, p. 1081, #120

➤ Johnson, E. P.	?	M	Sweden
---?, Carolina	47	F	Sweden
• Elfia	16	F	Sweden

Source: 1885 Census, W5, #151

➤ Johnson, Gust	41	M	Sweden
---?, Christine	29	F	Sweden
• Pet.	16	M	Sweden
• James	5	M	Canada
• Eva M.	4	F	Minnesota

Source: 1880 Census, ED19, p. 24, #176

➤ Johnson, Hans	26	M	Denmark
---?, Carin M.	25	F	Denmark
• Chas.	5	M	Denmark
• Emil	?	M	Minnesota

Source: 1885 Census, W5, #183

➤ Johnson, J. P.	48	M	Sweden
---?, Carolina	41	F	Sweden
• Johan	12	M	Sweden
• Samuel	10	M	Minnesota

Source: 1880 Census, ED19, p. 23, #169

➤ Johnson, John	24	M	Sweden
---?, Ingrid	23	F	Sweden
• Gustaf	1	M	Sweden

Source: 1880 Census, ED19, p. 26, #187

➤ Johnson, John P.	30	M	Sweden
---?, Wilhelmina	30	F	Sweden
• John O.	3	M	Minnesota

Source: 1885 Census, W5, #162

➤ Johnson, Lewis	37	M	Sweden
---?, Karen	34	F	Sweden
• Elida	12	F	Sweden
• John	11	M	Sweden
• Christina	8	F	Sweden
• Lena	3	F	Sweden
• Otis	8/12	M	Minnesota

Source: 1885 Census, W5, #149; SPCD, 1884/5

➤ Johnson, Nels	33	M	Sweden
---?, Anna	37	F	Sweden
• Ola	6	M	Sweden
• Carna	4	F	Sweden
• Inga	1	F	Sweden

Source: 1880 Census, ED19, p. 25, #179

➤ Johnson, Pat	36	M	Sweden
---?, Betsy	34	F	Sweden
• Tilda	4	F	Sweden

Source: 1875 Census, W5, p. 1081, #124

➤ Johnson, Per	30	M	Sweden
---?, Sophia	25	F	Sweden
• Matilda	10	F	Sweden
• Ida	7	F	Sweden

Source: 1885 Census, W5, #49

➤ Johnson, Peter	40	M	Sweden
---?, Bettie	36	F	Sweden

- Thilda 9 F Sweden
- Carrie 4 F Minnesota
- George 2 M Minnesota

Source: 1880 Census, ED19, p. 25, #180; SPCD, 1877/8-79/80

- **Jönsson, Christian** b. Slättåkra N, 1849-03-05
 (aka **Johnson, Christian**)
Persdotter, Kjerstin b. Enslöv N, 1854-06-29
 • Johan August b. ---?, 1874-09-23
 • Carl Emil b. Jonsberg E, 1877-01-28
 • Gerda Eugenia b. Jonsberg E, 1880-07-03
 • George b. St. Paul ca. 1884-09

Sources: EMIBAS: 1885 Census, W5, #49; SPCD, 1877/8

- **Kane, Patrick** 65 M Ireland
 ---?, Kate 70 F Ireland
 • Katie 25 F Illinois
 • James 4 M ?

Source: 1885 Census, W5, #44; SPCD, 1884/5

- **Kannsky, M.** 81 M Germany
 ---?, Mary 75 F Germany

Source: 1885 Census, W5, #69

- **Knutson, Andrew** 67 M Norway
 ---?, Sara 50 F Norway
 • Arne 17 M Norway
 • Knut ? M Norway

Source: 1885 Census, W5, #74; SPCD, 1882/3

- **Kristensson, Truls** b. ---?, 1852-10-12
 (aka **Christianson, Truls**)
Waldau, Johanna b. Gualöv L, 1854-12-27
 • Anna b. Fjälkinge L, 1878-09-07
 • Karl b. Fjälkinge L, 1880-01-06
 • Per b. Fjälkinge L, 1881-11-10

Sources: EMIBAS: EMIGR, #1882:2240:384 and #1883:3241:1328; 1885 Census, W5, #53; SPCD, 1884/5

- **Kristiansson, Johannes** b. Örkelljunga L, 1828-01-19;
 d. 1897-11-26

Andersdotter, Sara Maria

b. Kånna G, 1812

Sources: 1885 Census, p. 57; FLC (1872), p. 65; SPCD, 1884/5

➤ Kruchinsky, Andrew	30	M	Poland
---?, Francis	28	F	Poland
• Alex	1	M	Minnesota

Source: 1885 Census, W5, #75

➤ Kruschasky, Vallentine	31	M	Poland
---?, Justina	29	F	Poland
• Stacey	12	F	Poland
• Hellina	10	F	Canada
• Jennie	8	F	Canada
• Mary	6	F	Minnesota
• Alanis	3/12	M	Minnesota

Source: 1885 Census, W5, #72

➤ Lagerblad, Clas Otto	b. Snöstorp N, 1831-09-14
Svensdotter, Maria Christina	b. Tisselskog O, 1835-09-15
• Constantia Olga	b. Ödskölt O, 1859-06-12
• Ebba Juliana	b. Fröskog O, 1865-03-06; 1869
• Amanda Theresia	b. Fröskog O, 1867-09-22; d. 1867

Sources: EMIBAS; FLC (1872), p. 34; FCC, p. 8; SPCD, 1873-74

➤ Landberg, Ludvig	b. Barkåkra L, 1861-05-08
---------------------------	---------------------------

Source: EMIBAS

➤ Larson, Cherstin/Christine (widow of Ole)
--

Source: FLC (1856), p. 6

➤ Larson, Louis	36	M	Sweden
---?, Anna	29	F	Sweden
• Andrew	8	M	Sweden
• Nels	6	M	Sweden
• Ola	5	M	Minnesota

Source: 1880 Census, ED19, p. 25, #185

➤ Lästbom, Anders Gustaf Andersson	b. Åmål Landsf. P, 1835-10-02
(aka Lesbom)	
Eriksdotter, Brita Kajsa	b. Åmål Landsf. P, 1832-03-30;

- Christina
- Betsie

d. 1883-01-27
 b. Åmål Landsf. P, 1867-08-16
 b. St. Paul ca. 1873

Sources: EMIBAS; EMIGR, 1:408:1271; 1880 Census, ED19, p. 25, #182; FCC, p. 14; SPCD, 1878/9-80/1

- **Lind, August A.**
Johnson, Sophia Christina
 • Ernst Richard

b. Håbol O, 1854-01-16
 b. Håbol O, 1855-12-05
 b. St. Paul, 1889-05-28

Sources: EMIBAS; FLC (1872), pp. 87, 96; SPCD, 1884/5

- | | | | |
|------------------------|----|---|-----------|
| ➤ Lindbom, Anna | 30 | F | Sweden |
| (widow of John) | | | |
| • Pet. | 16 | M | New York |
| • Fred | 13 | M | Minnesota |

Source: 1880 Census, ED19, p. 25, #181; SPCD, 1875-82/3

- | | | | |
|----------------------------|----|---|-----------|
| ➤ Lindquist, Andrew | 30 | M | Sweden |
| ---?, Johanna | 29 | F | Sweden |
| • Emma | 4 | F | Minnesota |
| • Annie | 2 | F | Minnesota |

Source: 1885 Census, W5, #58; SPCD, 1884/5

- | | | | |
|----------------------------|----|---|--------|
| ➤ Lindquist, August | 32 | M | Sweden |
| ---?, Mary | 23 | F | Sweden |

Source: 1875 Census, W5, p. 1080, #112

- | | |
|------------------------------------|----------------------------|
| ➤ Ljungberg, Karl Niklasson | b. Sandsjö G, 1858-08-03 |
| ---?, Elin | b. Sweden ca. 1856 |
| • Valdemar | b. Backaryd K, 1879-07-03 |
| • Emili | b. Backaryd K, 1881-09-21 |
| • Ellen | b. St. Paul ca. 1885-01/02 |

Sources: EMIBAS; 1885 Census, W5, #54

- | | |
|---------------------------------|---------------------------|
| ➤ Löfdal [Lofdahl], Abel | b. Steneby P, 1844-12-27 |
| Johannesdotter, Karolina | b. Ärtemark P, 1841-02-28 |
| • Teodor | b. Ärtemark P, 1875-07-22 |
| • Frida | b. Ärtemark P, 1878-03-17 |
| • Simon (Swan) | b. Ärtemark P, 1879-10-06 |
| • Maria | b. St. Paul ca. 1884-09 |

Sources: EMIBAS; 1885 Census, W5, #80; SPCD, 1884/5

- **Löfgren**, Emanuel Ericsson b. Sweden ca. 1845
Olsson, Carolina b. Sweden ca. 1841
 • Carl b. Sweden ca. 1868
 • Olivia Maria b. St. Paul, 1870-09-08
 • Johan Fredrik b. St. Paul, 1871-11-20
 • Maria Mathilda b. St. Paul, 1873-12-20
 • Olof Alfred b. St. Paul, 1876-03-27

Sources: EMIBAS; 1875 Census, W5, p. 1080, #113; FLC (1872), p. 70; SPCD, 1873, 1875

- | | | | |
|--------------------|----|---|-----------|
| ➤ Lonn , C. | 38 | M | Sweden |
| ---?, Christine | 39 | F | Sweden |
| • Oscar | 9 | M | Sweden |
| • Emil | 7 | M | Sweden |
| • Jennie | 5 | F | Sweden |
| • Albin | 3 | M | Sweden |
| • Nettie | 1 | F | Sweden |
| • Emst | ? | M | Minnesota |

Source: 1880 Census, ED19, p. 26, #188

- **Lundgren**, Fredrik b. Otterstad R, 1857-10-12

Sources: EMIBAS; EMIGR, 19:569:2810; FCC; SAG (1993),

- **Lundqvist**, Christen Ludvig, b. Norra Vram M, 1831-06-26

Source: EMIBAS

- | | | | |
|--------------------------------------|----|---|-----------|
| ➤ Lyberg [Leburg] , C[harles] | 40 | M | Sweden |
| ---?, Christine | 39 | F | Sweden |
| • Ellen | 19 | F | Sweden |
| • Betsie | 6 | F | Minnesota |
| • Ida | 4 | F | Minnesota |
| • Thilda | 3 | F | Minnesota |
| • August | 1 | M | Minnesota |

Source: 1880 Census, ED19, p. 26, #189; SPCD, 1877/8-84/5

- **Magnu[s]son**, Sven b. Hånger F, 1844-05-27
Johannesdotter, Eva Maria b. Vittaryd G, 1851-06-30
 • Ida Kristina b. Vittaryd G, 1873-03-23

Sources: EMIBAS; 1885 Census, W5, #184; FLC (1872), p. 51; SPCD, 1884/5

- **Mårten[s]son**, Per b. Fågeltofta L, 1840-08-21;
Andersdotter, Bengta b. Vanstad M, 1842-12-22

- Karl
 - Nils
 - Johanna
 - Alfred (Albert)
 - Peter (Victor)
 - Hilma
- b. Tranås L, 1867-07-12
 b. Tranås L, 1871-06-26
 b. Tranås L, 1875-04-04
 b. Tranås L, 1877-10-21
 b. Tranås L, 1881-08-14
 b. St. Paul, 1884-11-02

Sources: EMIBAS; EMIGR, #1882:2953:822; 1885 Census, W5, #160; FLC (1872), p. 53; SPCD, 1884/5

- **Matt[s]son, Swan** 2? M Sweden
 ---?, Anna 30 F Sweden

Source: 1885 Census, W5, #152; SPCD, 1884/5

- **Miller, Simon** 28 M Germany
 ---?, F. 22 F Germany

Source: 1885 Census, W5, #68

- **Moody, Andrew B.** 24 M Sweden
 ---?, Mary 29 F Sweden

Source: 1885 Census, W5, #67; SPCD, 1884/5

- **Nelson, Ellen (widow of Nels)** 51 F Sweden
 • Mary 13 F Sweden
 • Olof 11 M Sweden

Source: 1880 Census, ED19, p. 24, #174

- **Nelson(?), Johannes** 30 M Sweden
 ---?, Inga Mary 32 F Sweden

Source: 1885 Census, W5, #176

- **Nilsson, Ellika** b. Vänga P, 1808-11-28

Sources: EMIBAS; 1880 Census, p. 26

- **Nilsson, Bengt** b. Hedeskoga M, 1858-10-22
Nilsson, Bengtra b. Ramsåsa L, 1856-04-03

Sources: EMIBAS; EMIGR, #13:473:13636; FLC (1878), p. 106

- **Nilsson, Hans** b. Sövestad M, 1846-06-08
Andersdotter, Sissela b. Röddinge M, 1849-12-26

- Ellen b. St. Paul, 1877-05-02
- Johanna b. St. Paul, 1880-03-05
- Nils Wilhelm b. Oakdale, MN, 1882-03-28
- Karl Fredrik b. Oakdale, MN, 1885-01-30
- Isak Peter b. Oakdale, MN, 1887-12-19

Sources: EMIBAS; 1880 Census, ED18, p. 8, #63; FLC (1856), p. 8; SPCD, 1877-84/5

- **Nilsson, Måns** b. Reslöv M, 1834-08-19
Andersdotter, Kristina b. Östra Frölunda P, 1842-03-26
 • Emma Justina C. b. St. Paul, 1886-08-14

Sources: EMIBAS; FLC (1872), p. 65

- **Nilsson, Per** b. Benestad L, 1837-09-20
Jönsdotter, Bengta b. Högestad L, 1840-07-18
 • Mårten b. Benestad L, 1869-11-13
 • Anna b. Benestad L, 1872-01-04
 • Nils b. Benestad L, 1874-04-02
 • Ingrid b. Benestad L, 1876-08-31

Sources: EMIBAS; EMIGR, #1881:997:25; FLC (1872), p. 66; SPCD, 1882/3-84/5

- **Nordqvist, Oliver** b. Ärtemark P, 1830-10-21
Danielsdotter, Johanna b. Vårvik P, 1831-07-11;
 • Erland b. Ärtemark P, 1856-03-15
 • Otto b. Ärtemark P, 1859-03-24
 • Fritiof b. Ärtemark P, 1862-02-12
 • Alma Eugenia b. Ärtemark P, 1865-04-04
 • Selma Augusta b. Ärtemark P, 1868-01-28
 • Charles b. St. Paul, ca. 1874

Sources: EMIBAS; EMIGR, #1:182:501 & #3:295:2388; 1875 Census, W5, p. 1080-81, #115; FLC (1856), p. 5; FLC (1872), pp. 26, 76, 86; SPCD, 1873-79/80

- **Norman, Per** b. Sweden; d. Sweden
Nilsdotter, Hanna b. Fränninge M, 1831-10-25
 • Ellen b. Sweden ca. 1860
 • Nils P. b. Västerstad M, 1861-11-07
 • Olof P. b. Västerstad M, 1864-07-28
 • Johanna b. Västerstad M, 1867-03-21
 • Magnus b. Västerstad M, 1869-04-30
 • Carl b. Västerstad M, 1871-09-19
 • Anna b. Östra Sallerup M, 1874-11-08

Sources: EMIBAS; EMIGR, #1881:2235:162; 1885 Census, W5, p. 20-21, #146; FLC (1856), p. 27; SPCD, 1882/3-84/5

- **Nyberg, Adolf Fredrik** b. Nyed S, 1855-01-10
 (aka **Magnu[s]son, Adolf Fredrik**)
Eriksdotter, Johanna b. Sävar AC, 1846-06-17
 • Hilma Katrina b. Söderhamn X, 1874-07-08
 • Karl b. Söderhamn X, 1877-07-26
 • Hanna Lovisa b. Söderhamn X, 1879-10-24
 • John S. b. St. Paul ca. 1884

Sources: EMIBAS; EMIGR. 16:77:17570: 1885 Census, p. 167; FLC (1872), p. 51; FCC, p. 21; SPCD, 1884/5

- **Oberg, Anders Andersson** b. Blentarp M, 1848-04-14
Nilsdotter, Kristina b. Blentarp M, 1849-01-02
 • Anders b. Blentarp M, 1872-09-26
 • Anna b. Blentarp M, 1875-08-03
 • Anna Elma b. St. Paul, 1880-12-30
 • Fredrick Anton b. St. Paul, 1885-11-14

Sources: EMIBAS; 1880 Census, ED19, p. 26, #187; FLC (1856), p. 15; SPCD, 1879/80-80/1

- **Olander, John A.** b. Sweden ca. 1853
 ---?, Anna b. Börringe, Malm, 1852-12-08
 • Elisabeth Christina b. St. Paul, 1883-03-17
 • Anton Edvard b. St. Paul, 1885-01-29

Source: EMIBAS; 1885 Census, W5, #62; SAG (1993), 101, 201

- | | | | |
|-------------------------|----|---|-----------|
| ➤ OI[e]son, Amil | 30 | M | Sweden |
| ---?, Anna | 34 | F | Sweden |
| • John | 4 | M | Sweden |
| • Olof | 1 | M | Minnesota |

Source: 1875 Census, W5, p. 1081, #122; SPCD, 1875

- | | | | |
|------------------------|----|---|--------|
| ➤ Olson, Anders | 59 | M | Sweden |
| ---?, Johanna | 60 | F | Sweden |
| • Mary | 23 | M | Sweden |
| • Matilda | 20 | F | Sweden |
| • August | 18 | M | Sweden |

Source: 1885 Census, W5, #45

- **OI[s]son, August** b. Älvsborg län, 1849
 ---?, Hannah b. Älvsborg län, 1858

Source: SAG (1993), 101, 202; SPCD, 1884/5

➤ Ol[e]son, Christian	49	M	Sweden
• Charles	13	M	Sweden
• August	10	M	Sweden

Source: 1875 Census, W5, p. 1081-82, #125

➤ Ol[e]son, Gustav	35	M	Sweden
• Gustav	13	M	Sweden
• ---?	10	M	Sweden

Source: 1875 Census, W5, p. 1082, #126

➤ Olsen, Gustav	28	M	Norway
---?, Caroline	33	F	Sweden
• Helmer	5	M	Minnesota
• Albert	4	M	Minnesota

Source: 1880 Census, ED18, p. 8, #62

➤ Olson, Hans	35	M	Sweden
• Anna	9	F	Sweden

Source: 1885 Census, W5, #79

➤ Ol[s]son, Per			b. Andrarum L, 1823-10-02;
Nilsdotter, Bengta (Betsy)			b. Fränninge M, 1833-08-26;
• Hanna			b. Östra Sallerup M, 1860-07-14

Sources: EMIBAS; 1880 Census, ED18, p. 8, #62; 1885 Census, W5, #52; FLC (1856), p. 10

➤ Ol[s]son, Per (Peter)			b. Östraby M, 1859-11-31
Österlund, Mariana Göthilda			b. Malmö M, 1858-09-08
• Ernst Victor			b. St. Paul, 1885-04-01

Sources: EMIBAS; 1885 Census, W5, #64; FLC (1872), p. 39; SPCD, 1884/5

➤ Österberg, Johannes			b. Västerstad M, 1859-09-18
------------------------------	--	--	-----------------------------

Sources: EMIBAS; 1885 Census, W5, #166

➤ Östergren, Nils Olof			b. Ljungby L, 1829-11-11
-------------------------------	--	--	--------------------------

Sources: EMIBAS; 1885 Census, W5, #166

➤ Person, G	43	M	Sweden
---?, Maja C.	46	F	Sweden
• Bettie	16	F	Sweden

• Marie	8	F	Minnesota
• Emma	5	F	Minnesota
• Edwin	2	M	Minnesota

Source: 1880 Census, ED19, p. 25, #1184; SPCD, 1878/9-80/1

➤ Petterson, Andrew	22	M	Sweden
---?, Sarah	36	F	Sweden
• Gust	3	M	Minnesota
• Anna	0	F	Minnesota

Source: 1875 Census, W5, p. 1081, #121; SPCD, 1875

➤ Pettersson, Carl Gustaf,			b. Sorunda AB, 1853-07-08
Larsdotter, Inga Charlotta			b. Sorunda AB, 1855-06-01
• Carl Wilhelm			b. Sorunda AB, 1876-02-25
• Amanda Josefina			b. Sorunda AB, 1877-09-22
• Elin Wilhelmina			b. Grödinge AB, 1879-08-15
• Sigrid Charlotta			b. Sorunda AB, 1882-02-01
• ---?			b. St. Paul ca. 1884-09

Sources: EMIBAS; EMIGR, #1883:800:153; 1885 Census, W5, #178

➤ Peterson, Johan August	40	M	Sweden
---?, Ella	40	F	Sweden
• Ame	11	M	Sweden
• Ellen	2	F	Minnesota

Source: 1885 Census, W5, #182; SPCD, 1884/5

➤ Peterson, Marten	?	M	Sweden
---?, Elise	?	F	Sweden

Source: 1885 Census, W5, #163; SPCD, 1884/5

➤ Pettersson, Sven			b. Södra Hestra F, 1846-11-26
Ersdotter, Ingeborg			b. Malung W, 1847-04-24
• Anna Josefina			b. Malung W, 1868-03-16
• Sven Axel			b. Falu Kristine W, 1875-02-12
• Ernst Petrus			b. Falu Kristine W, 1877-03-02

Sources: EMIBAS; EMIGR, #17:360:10871 and #23:437:18875; SAG V (Dec. 1985): 156-66

➤ Pihl, Henrik			b. Öved M, 1853-04-09
(aka Christianson, Henry)			
Persdotter, Elna			b. Västerstad M, 1845-00-00
• Nils (<i>styvson</i>)			b. Östraby M, 1874-01-31

- Carl Wilhelm
 - Anna
- b. Fränninge M, 1877-08-07
b. Östra Kärrstorp M, 1879-02-27

Sources: EMIBAS; 1885 Census, W5, #170; SPCD, 1884/5

- **Rebeck, Göran Nilsson** b. Sövestad M, 1846-05-17
Nilsdotter, Anna b. Blentarp M, 1846-04-19
- Frank Edward b. St. Paul, 1877-03-16
 - Hilma Carolina b. St. Paul, 1882-08-20
 - Henrik William b. St. Paul, 1884-12-08

Sources: EMIBAS; 1880 Census, ED 18, p. 8, #60; FLC (1856), p. 10; SPCD, 1878-80/1

- **Riley, Phil** 26 M Ireland
 ---?, Mary 25 F Ireland

Source: 1885 Census, W5, #46

- **Serner [Zärner], Gustaf Reinhold** b. Levene R, 1861-03-06
Blomqvist, Maria b. Larv R, 1856-09-25
- Johan b. Larv R ca. 1880
 - ---? b. Minnesota ca. 1882
 - Anna Maria b. St. Paul, 1884-11-29
 - George Victor b. St. Paul, 1887-04-06

Sources: EMIBAS; EMIGR, #19:478:2773 and #19:478:2774; 1885 Census, W5, #175; FLC (1872), p. 61; SPCD, 1884/5

- **Sanduskey, ---?** 48 M Poland
 ---?, Katarina 35 F Poland
- Frank 14 M Poland
 - Ward 4/12 M Minnesota

Source: 1885 Census, W5, #70; SPCD, 1884/5

- **Skoglund, Olof A** b. Sweden ca. 1843
 ---?, Mary b. Ny S, 1847-08-06

Source: 1880 Census, ED19, p. 23, #164; SAG (1993), 109, 208; SPCD, 1880/1

- **Sundberg, John G.** b. Tveta S, 1858-12-12
Nilsdotter, Ida b. Boda S, 1874-05-10

Sources: EMIBAS; FCC; 1880 Census, ED19, p. 23, #164; SAG (1993), 110, 209; SPCD, 1880/1

- **Sundgren, Olof** 28 M Sweden
 ---?, Marie 27 F Sweden

- Ainar 6 M Sweden
- Verner 4 M Sweden

Source: 1885 Census, W5, #168; SPCD, 1882/3-84/5

- **Tern, Charles** 32 M Sweden
- ?, Mary 28 F Sweden
- Emil 8 M Sweden
- Anna 3 F Sweden
- John 0 M Minnesota

Source: 1875 Census, W5, p. 1082, #129

- **Thorson, Per** 44 M Sweden
- ?, Metta 37 F Sweden
- Ellen 11 F Sweden

Source: 1880 Census, ED19, p. 23, #163; SPCD, 1879/80-80/1

- **Wallgren, August S.** b. Laske-Vedum, 1855-08-29
- Gustafson, Clara** b. Vårgårda, Skövde O, 1857-05-30

Source: SAG (1993), 114, 213; SPCD, 1884/5

- **Wallin, Anders Persson** b. Fjellie M, 1854-05-11
- Persdotter, Sissa** b. Vallkärra M, 1854-11-16
- Johanna Alfrida b. Vallkärra M, 1883-08-01
- Kate b. St. Paul, 1885-04
- Jenny Alfrida b. St. Paul, 1886-07-02
- Edward Allen b. St. Paul, 1888-06-14

Sources: EMIBAS; EMIGR. #1884:265:1469; 1885 Census, W5, #51; FLC (1872), p. 53; SPCD, 1884/5

- **Wi hoskey, John** 20 M Poland
- ?, Rosa 19 F Poland

Source: 1885 Census, W5, #77

- **Winqvist, Jonas Johansson** b. Norra Ving R, 1821-03-04
- Arvidsdotter, Kristina** b. Höganäs M, 1837-04-07

Sources: EMIBAS; 1880 Census, ED19, p. 24, #177; SPCD, 1876-80/1

(to be continued)